

---

2022-2023



Communities  
In Schools®

---

Pennsylvania

ANNUAL  
REPORT





# TABLE OF CONTENTS

- 3** A Message from CISPA President & State Director
- 4** Our Unique Model
- 5** CISPA Leadership
- 6** Our Districts and Schools
- 7** Our Impact
- 8** '22-'23 School Year Highlights
- 9** Our Supporters
- 10** Our Supporters (cont.)
- 11** Financial Data
- 12** Board of Directors



Communities  
In Schools®  
Pennsylvania



# DEAR FRIENDS & SUPPORTERS,

On July 1, 2023, I stepped into the role of Communities in Schools of Pennsylvania's President & State Director after serving as the organization's Executive Director and Vice President for four years. I am both proud and excited to present to you this annual report, which highlights our program successes, partnerships, and growth from the 2022-2023 academic year.

During the 2022-2023 year, our organization celebrated some big wins. CISPA was awarded funding from the Communities in Schools National Office as part of a Scaling for Success initiative that helped fund growth in Lebanon, York, and Susquehanna Township. We've added additional leadership team positions in our Central and Southwestern teams to support our ongoing program growth, welcomed new board members, implemented programs at our first preschool site, and added two new school district partners.

Additionally, we launched the Justin Croson #AllinforKids Fund, a memorial fund established in honor of the late Juston Croson by his parents. This fund provides financial support to students in York City to support participation in extracurricular activities, workforce development, and/or college readiness activities. On behalf of the entire CISPA team, I can't overstate how honored we are as an organization that the Croson family has entrusted us to help carry on Justin's legacy.

We are entering the 2023-2024 academic year knowing that our tremendous growth is likely to continue. Since 2019, we've expanded our in-school programs by 194% - which is staggering! However, as we continue to grow bigger, we also want to grow better. We are committed to offering high-quality, evidence-based programming that moves the needle on student achievement across the Commonwealth. It is our promise to you that as we continue to grow and expand, we will not lose sight of that core goal.

We simply can't transition into a new school year without taking a moment to thank community. Our staff, volunteers, supporters, donors, and partners are critical to our success; we simply could not do this work without you! We thank you for your ongoing support and are so excited to begin another successful school year with you by our side.



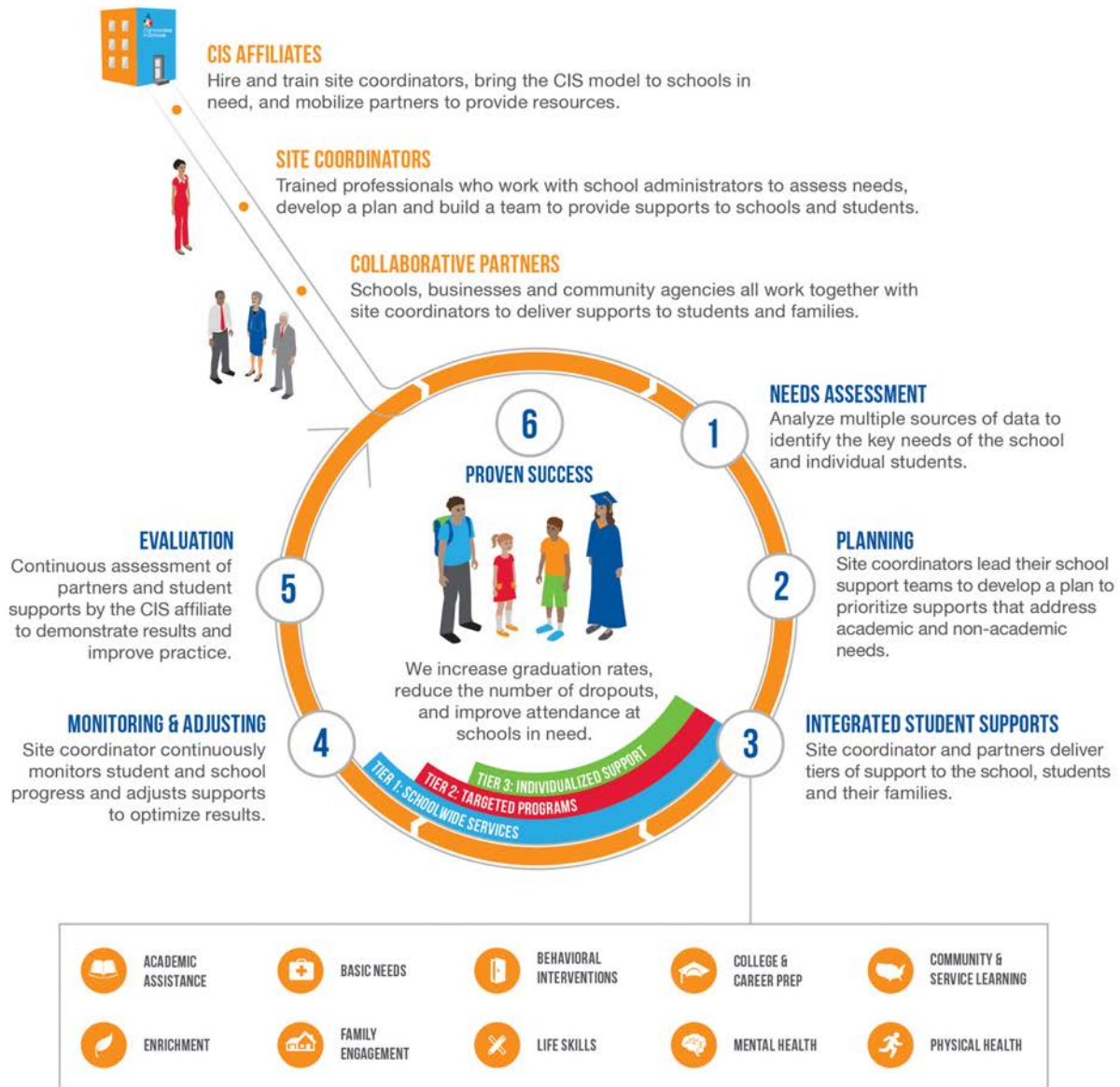
**Jessica Knapp**  
**CISPA President & State Director**





# OUR UNIQUE MODEL

Our model of integrated student supports is not about doing the work for students. It's about making sure all students have access to the community resources and tools they need to unlock their potential and thrive.



Communities in Schools of Pennsylvania surrounds students with a community of support, empowering them to stay in school and achieve in life. Every child needs and deserves:

- A one-on-one relationship with a caring adult.
- A safe place to learn and grow.
- A healthy start and a healthy future.
- A marketable skill to use upon graduation.
- A chance to give back to peers and community.

# CISPA LEADERSHIP



**Jessica Knapp**  
President &  
State Director



**Lyndsey Sturkey**  
Vice President



**Peter Niche**  
Controller



**Leyna Rozon**  
Director of Innovation  
and Learning



**Lindsay Swartz**  
Director of Grants  
and Partnerships



**Allyson Null**  
Communications  
Manager



**Alex Kadyszewski**  
Director of South  
Central PA  
Programs



**Angelica DeSantiago**  
Director of Central  
PA Programs



**Will Webster**  
Director of  
Southwestern PA  
Programs



**Aaron Marshall**  
Southwestern PA  
Program Manager



**Rebeca Chlebnikow**  
Central PA  
Programs Manager



# OUR DISTRICTS AND SCHOOLS

\*CISPA programming launched during the '22-'23 school year

## **Cambria County Child Development Corporation**

Morrell Neighborhood School\*

## **Central Cambria School District**

Central Cambria Middle School\*

## **Central Dauphin School District**

Central Dauphin East High School\*  
Central Dauphin East Middle School  
Swatara Middle School\*

## **Columbia Borough School District**

Columbia Middle School - Taylor Campus

## **Cornwall-Lebanon School District**

Ebenezer Elementary School  
Union Canal Elementary School

## **Greater Johnstown School District**

Greater Johnstown Elementary School  
Greater Johnstown High School  
Greater Johnstown Middle School

## **Lebanon School District**

Lebanon Middle School  
Northwest Elementary School

## **The School District of the City of York**

Ferguson K-8  
Goode K-8  
Hannah Penn K-8  
Jackson K-8  
McKinley K-8  
William Penn High School

## **Somerset Area School District**

Maple Ridge Elementary School  
Somerset Area Junior High School\*

## **Susquehanna Township School District**

Sara Lindemuth/Anna Carter Primary School  
Susquehanna Township Middle School  
Thomas W. Holtzman Jr. Elementary School 3-5

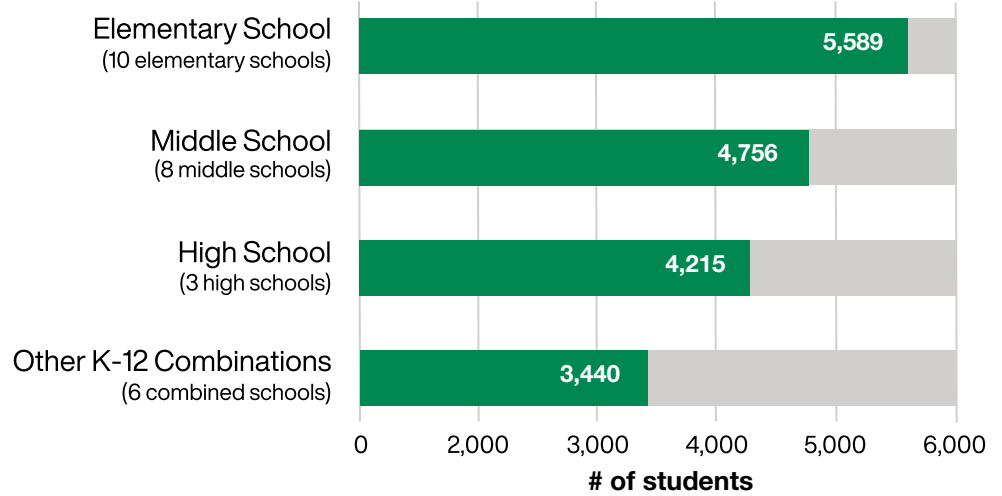


# OUR IMPACT

## Our Reach



### Students Served by School Type



An additional 120 students were served at one community-based site.

## Our Students

**18,220**

students served through Tier I or whole school supports (duplicated)

**43,043**

parents served through Tier I or whole school supports (duplicated)

**22,364**

basic needs items distributed

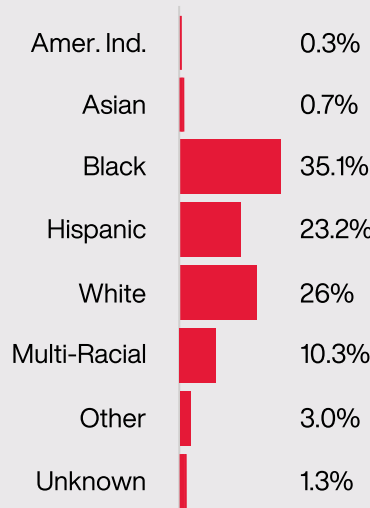
**529**

case-managed students

**142**

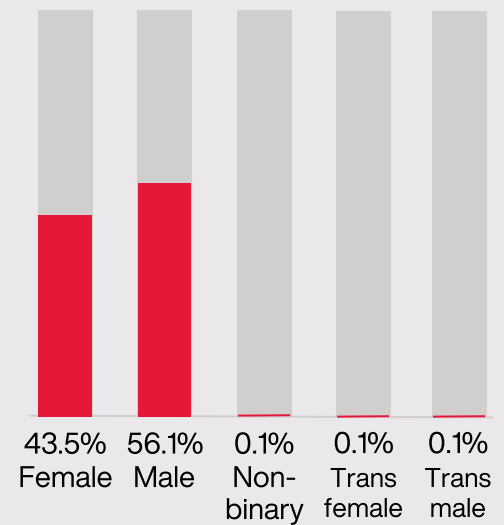
volunteers

### Race



Values may not total to 100% due to rounding.

### Gender



Values may not total to 100% due to rounding.

## Our Results



**76%**

improved attendance



**81%**

improved behavior



**76%**

improved academics



**82%**

made positive progress toward their annual goals



# 2022-2023 SCHOOL YEAR HIGHLIGHTS

In March 2023, CISPA established an educational fund to honor Justin Croson, who tragically passed away in early 2022. Justin was a 2020 Spring Grove High School graduate and a loyal friend who loved music, sports, and weightlifting. The Justin Croson #AllinforKids Fund supports youth in The School District of the City of York by covering expenses related to extracurricular activities, athletics, and college/career readiness. Resources and supplies distributed include but are not limited to sports equipment, attire for jobs or internships, SAT/ACT testing, and college application fees.



In October 2022, Central Dauphin East Middle School organized a pumpkin painting competition as a school-wide Tier I event. Thanks to Shippensburg Produce Auction, 120 pumpkins were delivered to CDEMS. Students from each grade were granted one hour to create their own pumpkin masterpieces, a teacher/student council voted on their favorite pumpkins from each grade, and the winners were put out on display for the school's Spooky Dance. CISPA case-managed students have expressed that PBIS events give them a purpose to be in the building, meet goals, and take pride in what their building has to offer.



CISPA launched an exciting new initiative in 2023: a diverse menu of professional development training opportunities led by our very own Director of Innovation and Learning, Leyna Rozon.

In June 2023, Leyna hosted a Youth Mental Heal First Aid training for Greater Johnstown School District's Student Services Team.

CISPA provides customized training sessions both in-person and virtually for organizations and groups. To learn more, visit [www.cisofpa.org/training-opportunities](http://www.cisofpa.org/training-opportunities).



# OUR SUPPORTERS

We know we can't do this work alone. Communities and Schools of Pennsylvania is deeply grateful for the following individuals, organizations, and partners whose generous support has significantly impacted our mission during the '22-'23 school year.

## DONORS

1889 Foundation  
Aetna Better Health Kids, a CVS Health Company  
Alex Kadyszewski  
Allyson Null  
Amanda Soliday  
Amazon Smile Foundation  
AmberR. Abreu  
Amber Reed  
Amcor Cares  
Andrew Ettenger  
Angie Mummert  
Anne Lewis  
Anne M. & Philip H. Glatfelter, III Family Foundation  
Anne Santin  
April High  
Becky Lyda  
Beth Johns  
Big Lots Foundation of The Columbus Foundation  
Brown Schultz Sheridan & Fritz (BSSF), CPAs  
C&S Wholesale Grocers  
Carol Hawk  
Casey Coulter  
Catherine Edwards  
Community Foundation for the Alleghenies  
Costco Wholesale  
Curtis Henning  
Cynthia Kirby Reedy  
Dan Becker  
Danielle Woods  
Dawn R Connelly  
Diane E. Baker  
Diane Garber  
Dr. Arthur Abrom  
Dr. Carol Saylor  
Eric Kramer  
Fitzroy Lewis  
Genevieve Tuchow  
Hannah Grant  
Hannah Heintzelman  
Heather Custred  
Heather Hyland  
High Foundation  
Hudson Group  
Jamie Showers  
Jessica Knapp  
Jodi Hillard  
John Feist  
John Whalen

Jonathan Grant  
Jordan Grant  
Joyce Zoldos  
JudyKay Bard  
Julia Krall  
Kevin Kilgore  
Kimberly Johnson  
Kimberly Sterner  
Kimberly Sturkey  
Kiran Gudoor  
Leadership York  
Lee Initiatives Health & Wellness Endowment  
Loren Kroh  
Lyndsey Sturkey  
Mark Grant  
Mary Croson  
Mayor Michael R. Helfrich  
McCormick Family Foundation  
Melissa Day  
Michael and Christine Haldeman  
Michael Huang  
Michael J. Habecker  
Michael Regan  
Michael Thew  
Miriam Ortega-Brown  
Morgan Flood  
Mr. Brian E. Hartman  
Mr. Damian Zamias  
Mr. Frank Kadyszewski  
Mr. Kevin Kadyszewski  
Mr. Kim Staudt  
Mr. Reid Carpenter  
Mrs. Lindsay Swartz  
Mrs. Rebecca Basehore  
Ms. Jenna Lewis  
Ms. Leyna Rozon  
Ms. Nicole Conway  
Ms. Samantha Sweigert  
Ms. Staci L. O'Byle  
Ms. Tracy Daniels  
Natalie Martin  
Nicole Malinoski  
Nyne Sellers  
Patricia Bestoso  
Phoebe Walker  
PNC Charitable Trust  
PNC Foundation  
Powder Mill Foundation



Rebecca Glatfelter  
 Rebecca Rodriguez  
 Rebekah Willis  
 Rich Whalen  
 Robyn Maitoza  
 Ruth Knapp  
 Ryan Baker  
 Sarah Lesniara  
 Shea Saman  
 Sherri and Dave Croson  
 Susan Grimm Mattox  
 TE Connectivity Foundation  
 The Alexander & Jane Boyd Foundation  
 The Donald B. and Dorothy L. Stabler Foundation  
 The Donley Foundation  
 The Hershey Company

The Jacob Fend Foundation  
 The Lebanon Kiwanis Foundation  
 Tiana Kelly  
 Timothy Knapp  
 United Way of Lancaster County  
 United Way of Lebanon County  
 United Way of the Capital Region  
 United Way of York County  
 UPMC Pinnacle Foundation  
 Verizon  
 Vince Whalen  
 Walmart Store # 1529  
 Walmart Store # 1591  
 White Rose Leadership Institute  
 Wonique Simpson  
 York County Planning Commission

## PARTNERS

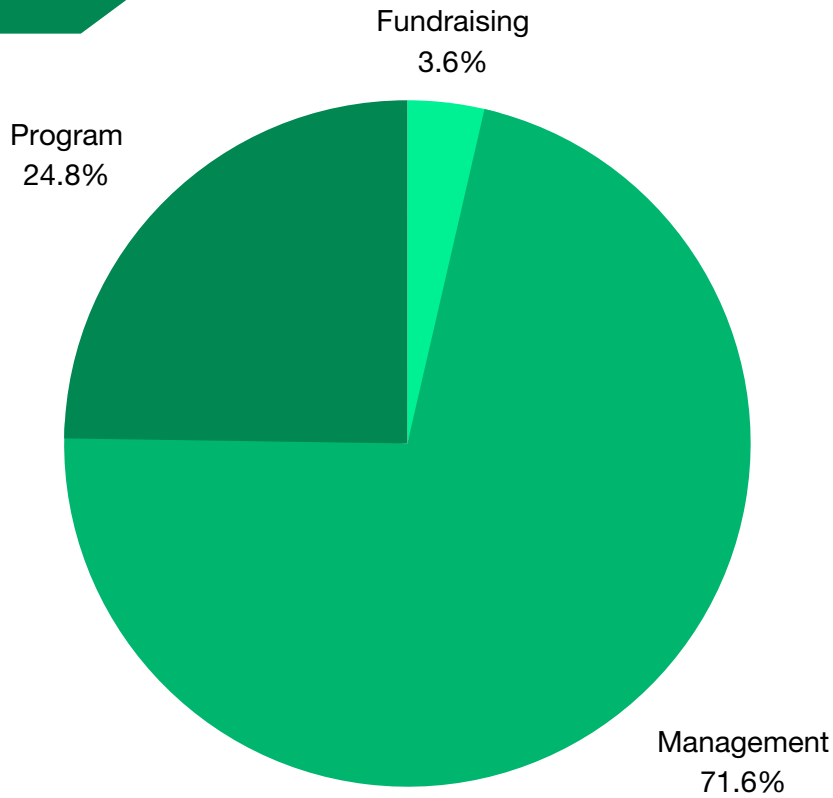
1889 Foundation  
 Adelphoi Village  
 After School Live  
 Alternative Community Resource Program  
 Amanda Farley Norwex  
 Americorps  
 Appalachian Youth Services  
 Asbury UMC  
 Baptists on a Mission  
 Belmont Bean Co  
 Bethel Commandment Church  
 Bible Tabernacle Christian Center  
 Breaking the Barriers  
 Bottle Works Ethnic Arts Center  
 Calvary UMC  
 Cambria County Backpack Program  
 Cambria County Drug and Alcohol Program  
 Cambria County Library  
 Cambria County REACH  
 Career Link  
 Caron Foundation  
 Catholic Charities of Altoona/Johnstown  
 Central PA Food Bank  
 CityView Community Church  
 Coats of Friendship  
 Community Foundation for the Alleghenies  
 Cornerstone Baptist Church  
 Crossing Jordan Ministries  
 Cuddles 4 Kids  
 Dauphin County C&Y  
 Dauphin County Crisis  
 Dauphin County DHS  
 Dick's Sporting Goods  
 Dominos Pizza  
 Drager Family Counseling and Associates  
 Dunkin Donuts  
 Family First Health  
 First Presbyterian  
 Flood City Youth Fitness Academy

Friendship Baptist Church  
 Fostering Hope York  
 Genesis Church  
 Genesis Spanish Church  
 Genova's  
 George's Hair Salon  
 Giant Food Stores, LLC  
 Goodwill of the Southern Alleghenies  
 Greater Pittsburgh Food Bank  
 Hanna Education Foundation  
 Heidleberg UCC  
 Hidden Springs Flowers  
 Hope 4 Johnstown  
 Hyndman Health Center  
 Intermediate Unit 08 (IU08)  
 Jeannie Stevens  
 Jefferson Center for Population Health  
 Jersey Mikes Subs  
 Johnstown Housing Authority  
 Kal's Bakes and Cakes  
 Kinder Kraft Co.  
 Lady Lions Club  
 Laurel Life  
 LCBC  
 Learning Lamp  
 Lee Initiatives, Inc.  
 Lifepath Ministries  
 Lifepath Thrift Store  
 Messiah UMC  
 Miss Bobbi's Place  
 Mission Central  
 MOD Pizza  
 Nutrition Inc.  
 Penn Highlands Community College  
 Phyllis DeStephano  
 Plant Box Co  
 Power Packs  
 Recycle Bicycle Harrisburg

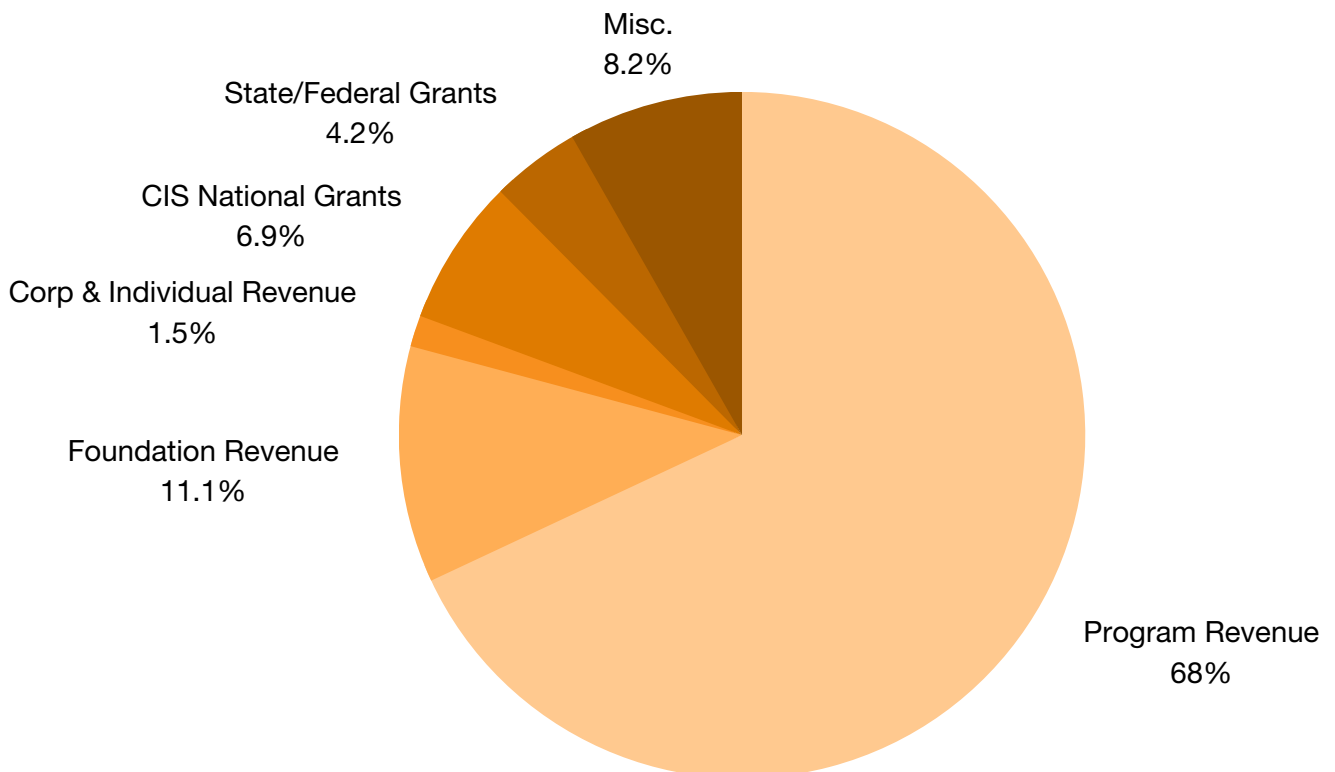
Redemption International  
 RKL LLP Certified Public Accountants  
 RMS Automotive  
 Rock Mill Industries  
 Rod Goelz Music  
 Roll R Way  
 Rotary Club of Johnstown  
 Safe Kids PA  
 St. Matthew's Lutheran Church  
 Salvation Army - Johnstown  
 Sheetz  
 Sigma Gamma Rho Society-Mu Nu  
 Sigma Chapter-York, PA  
 Somerset Trust Co.  
 Stick N Move Boxing  
 Tanja Gray  
 Texas Roadhouse  
 Thomas Automotive  
 Thrive Church  
 Touch of the Master  
 Toys for Tots  
 Trinity AME Zion Church  
 Union Lutheran  
 Unitarian Universalists Congregation  
 of York  
 United Methodist Human Services  
 United Way of the Laurel Highlands  
 Upperroom Missionary Church  
 Victim Services  
 Weis Markets  
 WeServU  
 Wellspan Health  
 White Clover Farm  
 YMCA Johnstown  
 York County Library  
 Young Life  
 Zeal Church  
 Zion UMC



## Expenses



## Revenue





# BOARD OF DIRECTORS

## CHAIRMAN OF THE BOARD

Kim Staudt, PWC (Retired)

## VICE CHAIRMAN OF THE BOARD

Nyne Sellers, Launch Philadelphia

## SECRETARY

Nicole Conway, Vartan Group

## TREASURER

Shea Saman, Feeding Pennsylvania

## BOARD MEMBERS

Amy Beitel, Ligonier Valley Chamber of Commerce

David Kerr, AT&T

Dr. Robyn Maitoza, York College of Pennsylvania

Dr. Vicki Ryan, AIU3

## EMERITUS

Reid Carpenter, Council of Leadership (Retired)

Damian Zamias, Zamias Services



# IN SCHOOLS TO HELP KIDS STAY IN SCHOOL.



Communities  
In Schools®

Pennsylvania



**WEBSITE**

[www.cisofpa.org](http://www.cisofpa.org)



**FACEBOOK**

[@communitiesinschoolspa](https://www.facebook.com/communitiesinschoolspa)



**INSTAGRAM**

[@cisofpa](https://www.instagram.com/cisofpa)



**Want to support our work?  
Join our community!**